



MELITTA CAFFEO® BARISTA TS	SILVER	BLACK
Type	F750-101	F750-102
GTIN 40.06508.	208111	208104



CAFFEO® BARISTA TS

NEW



THE NEW GENERATION OF
FULLY AUTOMATIC COFFEE MACHINES

The new Melitta® Caffeo® Barista – The Barista for your home!

The new barista collection with up to 18 varieties of coffee to make at home. As well as the innovative and intuitive operating concept, authentic coffee preparation in accordance with original Italian recipes gives you coffee enjoyment just like from the professionals. The superior design with high quality chrome and stainless steel elements emphasises the premium quality of the new Melitta® fully automatic coffee machines in 2013.

Not only a pleasure to look at – thanks to the delicious coffee varieties it is also a pleasure for your taste buds.

“Finally, I can simply be a connoisseur of coffee at home too – thanks to the new Caffeo® Barista from Melitta®.”

Timon, Melitta Barista



The highlights at a glance:



Barista know-how: Enjoyment and variety just like from the professionals
Thanks to the pre-programmed recipes you can enjoy up to 18 different varieties of coffee. The Original Preparation Process ensures your coffee is made in accordance with the original Italian recipes. The unique 'Automatic Bean Select' in the Caffeo® Barista TS chooses automatically or if you prefer you can choose the right type of bean for your favourite coffee with just one touch.



Operating Concept: Every touch a pleasure
The innovative Touch & Slide feature allows you to use the appliance intuitively. Due to the high definition, clearly laid out TFT colour display and the One Touch feature you can make your personal favourite coffee with just one touch. Thanks to Double Cup Mode you can make 2 cups of your favourite coffee at one time.



Design: A special look
Linear. Purist. Modern. The Caffeo® Barista impresses with its clear design and superior materials. The high gloss finish with chrome and stainless steel elements gives it the perfect look.



Barista know-how: Making every coffee a true original



18 varieties of coffee:
A variety to fulfil every wish. Enjoy classic varieties of coffee such as espresso, café crème, cappuccino and latte macchiato. Thanks to the new Caffeo® Barista you can also enjoy exclusive delicacies such as a 'flat white' (a strong espresso with a thin layer of finely frothed milk), a ristretto (a very concentrated espresso), an espresso doppio (a double espresso) and many more. With the 'Extra Shot' feature you can repeat the grinding process up to three times – for an even more intensive coffee flavour.



Bean Select with Aromasafe®-Bean Container
Thanks to the innovative 'Automatic Bean Select' your coffee is automatically made with the right type of beans, pure and unmixed, cup for cup. Alternatively you can change the automatic choice of bean compartment with just one touch: For an espresso, the Caffeo® Barista takes the beans automatically from the correct compartment. If you want your espresso made with café crema beans you can change this using the menu. The 'Active Bean Monitoring' helps you to prevent the grinder running on empty when making coffee and lets you know in good time if the bean container needs refilled.



Original Preparation Process:
For coffee specialities made in the original way with the ingredients in the right order just like they make it in Italy: So with latte macchiato the espresso is added only after the frothed milk and milk. With cappuccino the espresso is poured before the frothed milk. This guarantees the authentic enjoyment of all 18 varieties of coffee.



My Coffee Memory:
The My Coffee Memory feature saves the individual settings for all available varieties of coffee for up to 4 people. Coffee strength (with and without pre-brewing feature), brewing temperature, and the individually desired amount of coffee, frothed milk or hot water can be easily set and called up using the name you programme in.

The Caffeo® Coffee Enjoyment – as varied as it is exclusive

The classic varieties of coffee:

 ESPRESSO Coffee 40 ml	 CAFÉ CRÈME Coffee 120 ml	 CAPPUCCINO Coffee 50 ml Milk 80 ml	 LATTE MACCHIATO Milk 120 ml Coffee 70 ml
-------------------------------------	--	--	--

An impressive array of very special coffee varieties:

 RISTRETTO Coffee 30 ml	 CAFÉ CRÈME DOPPIO Coffee 120 ml	 ESPRESSO MACC Coffee 30 ml Milk 20 ml	 LATTE MACCHIATO Milk 120 ml Coffee 80 ml
 LUNGO Coffee 60 ml	 AMERICANO Coffee 30 ml Water 120 ml	 CAFFÉ LATTE Coffee 70 ml Milk 110 ml	 LATTE MACCHIATO Milk 120 ml Coffee 90 ml
 ESPRESSO DOPPIO Coffee 80 ml	 AMERICANO Coffee 60 ml Water 150 ml	 CAFÉ AU LAIT Coffee 100 ml Milk 50 ml	 FLAT WHITE Coffee 60 ml Milk 30 ml
 RISTRETTO DOPPIO Coffee 60 ml	 LONG BLACK Water 100 ml Coffee 80 ml		

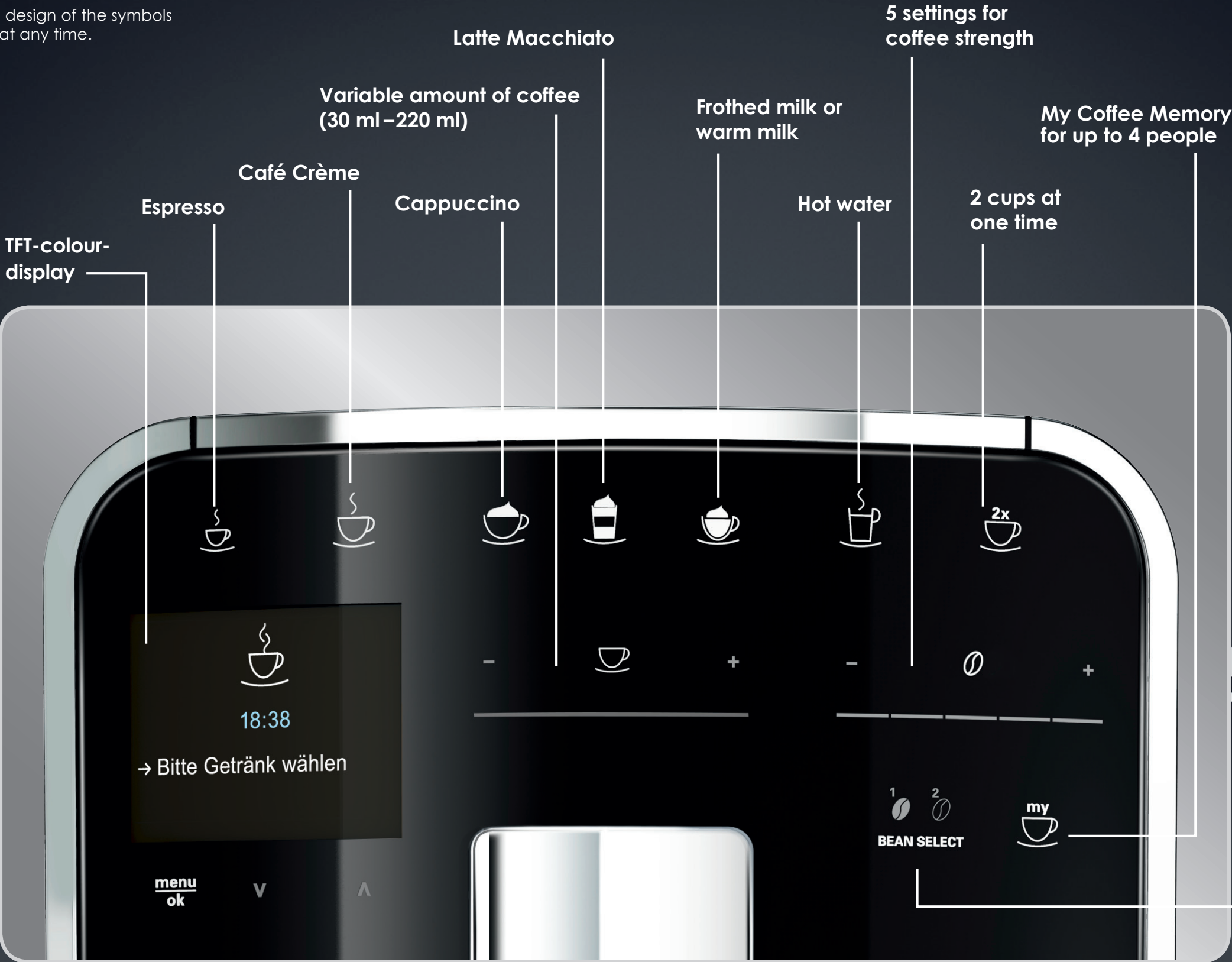


* Please note: After changing the bean type some beans of the previous type remain in the grinder. As these need to be used up, it can take between one and two cups – depending on coffee strength – to change over to the new type of beans.

The symbols show the original images on the Caffeo® Barista display.

The innovative touch display at a glance

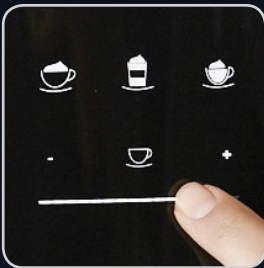
The Caffeo® Barista impresses with an easy to understand operating concept and an innovative Touch & Slide display. The spacious and modern design of the symbols make it a pleasure to use at any time.



Touch and slide operation



Operating Concept: Innovative, Intuitive and individual



Touch & Slide operation:
The innovative Touch & Slide feature makes it simple to set and use the Caffeo® Barista. Every touch is a pleasure.



One Touch Feature:
Whether you want a pre-programmed variety of coffee, warm milk, frothed milk or hot water. Every touch gives you your favourite drink.



All-In-One Outlet with LED illumination:
The All-In-One Outlet for coffee, milk, frothed milk and hot water means you don't have to move your cup here and there. It is height adjustable up to 140 mm, which means there is space even for tall latte macchiato glasses.



Double Cup Mode:
Pour two cups of coffee without moving the cups – double coffee enjoyment for latte macchiato, cappuccino and other varieties of coffee.

Design

Enjoy your coffee with all your senses: The Caffeo® Barista impresses with its modern design and high quality workmanship using superior materials. The high gloss surfaces with chrome and stainless steel elements make these fully automatic coffee machines a real highlight.

With the flexible Plug-In Milk System which can be placed to the left or the right of the outlet, the Caffeo® Barista fits in every kitchen.



Chrome Edges



Chrome Outlet



Stainless Steel Drip Tray



High Gloss Surfaces

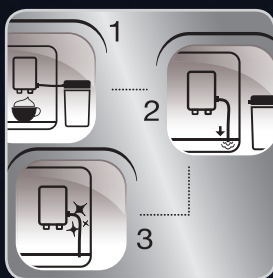


Plug-In Milk System



flexible plug-in milk system

Hygienic, easy to clean



Easy Steam Cleaning (Milk System):

Quick and hygienic cleaning of parts which come into contact with milk using hot water and steam. If you wish clean after each use, or choose separately in the menu.

Cleaning Programme Milk System:

Integrated cleaning programme to thoroughly remove residue from the milk system. Designed for use with Melitta® Milk System Cleaner for fully automatic coffee machines.



Cleaning/Descaling (Coffee System):

The Caffeo® Barista shows automatically in the display when it needs to be cleaned or descaled. The cleaning or descaling programme can be chosen from the menu and takes you step by step through the process.



Removable Brewing Unit:

The practical and easy to remove brewing unit is also easy to clean. This also allows the inside of the machine to be cleaned.



Energy saving feature:

As well as the programmable Energy Saving Mode and the programmable automatic switch off feature, Caffeo® Barista also has a 0 Watt switch allowing you to easily switch off your Caffeo® Barista.

The Features at a glance

- Recipe feature: 14 additional programmed coffee specialities with different recipes, as well as the 4 standard types of coffee
- Original Preparation process: Coffee specialities prepared in the original Italian way.
- Automatic Bean Select: chooses the right kind of bean automatically or with just one touch and can be set individually
- Active Bean Monitoring: informs you in good time as soon as the bean container needs to be refilled, to prevent the grinder running on empty when making your coffee
- Aromasafe Coffee Bean Container: the special seal in the lid ensures long lasting, fresh coffee aroma
- Brewing temperature programmable with three settings (87 °C/90 °C/93 °C)
- Five settings for coffee strength (including 'extra mild without pre-brewing')
- One touch feature for all coffee specialities
- Touch & Slide operation to choose coffee strength and amount
- High definition TFT colour display with user friendly operation and step for step instructions
- Flexible Plug-In Milk System: Detachable milk system can be attached on left or right of the outlet. With an external dishwasher proof milk container which fits in any fridge
- All-In-One Outlet with LED illumination: Two nozzles for coffee and for milk, one behind the other on each side, and a nozzle for hot water
- My Coffee Memory: individual settings can be saved for up to 4 people
- Double Cup Mode: Pour two cups at one time
- Easy Steam Cleaning: quick and hygienic cleaning of the milk system each time the milk unit is used
- Cleaning Programme Milk System: Integrated programme to thoroughly clean residue from the milk system
- Automatic cleaning, descaling and rinsing programme
- Operating buttons with white LED background illumination
- Steel conical grinder with three settings
- Extra shaft for ground coffee
- Detachable brewing unit with pre-brewing feature
- Automatic grinding quantity control: to guarantee the best coffee enjoyment – always
- Separate hot water preparation possible (i.e. for tea)
- Possible to choose between frothed milk or warm milk
- Detachable water tank: 1.8 L capacity, automatic level sensor (warns you in good time when it needs to be refilled)
- High gloss material with chrome elements (coffee outlet, appliance edges)
- Stainless Steel Drip Tray
- Compatible with Claris filter cartridges (1 cartridge included in each pack)
- Height-adjustable coffee outlet: For cups up to 140 mm high
- Practical cup warming plate to pre-warm cups (passive)
- Modern energy saving feature and on/off switch with 0 Watt feature
- Practical castors at the rear to move appliance easily
- Welcome pack containing: Cleaning tab, milk system cleaner, liquid descaler and water filter
- Colours: silver-black, black high gloss
- 1,450 watts peak power
- 15 bar



Don't forget: Our maintenance and cleaning products especially developed for Melitta® fully automatic coffee machines bring customers into your store regularly.



1. PERFECT CLEAN CLEANING TABS
2. PERFECT CLEAN MILK SYSTEM CLEANER
3. ANTI CALC ESPRESSO MACHINE LIQUID DESCALER
4. PRO AQUA FILTER CARTRIDGES (CLARIS)